

**June 15th-
Aug 7th**



The Arc[®]
Southeast Iowa



Summer Camp 2026

Kids Camp

Kindergarten-5th Grade

Teens Camp

Middle School- High School-Transitions

Come join us this summer and make memories that will last a lifetime!

Table of Contents



Introduction



Registration & Enrollment



Payment & Funding Resources



Polices/Trainings



Location, Dates & What to bring



Kids Camp Schedule



Teens Camp Schedule

Dear friends of The Arc of Southeast Iowa,

Thank you for considering The Arc's Summer Camp programming! We are an organization that provides a quality summer experience to two separate groups of youth, first ages 5-11, and second 12-21, with developmental and intellectual disabilities. Our mission throughout the duration of summer camp is to provide enriching and fun opportunities where campers can explore the community, build friendships, be creative, and practice social and emotional skills.

Staffed with skilled leaders, the summer camp schedule is jam packed with a variety of exciting and engaging crafts, activities, and field trips. Each day, camp participants will be paired to staff members on a 1:2 or 1:3 ratio, depending on the campers level of need. This allows for a personalized experience for the campers as well as providing a safe and supervised environment. Alongside the structured schedule, there is scheduled free time where the campers can explore their own interests and form new friendships.

We are looking forward to working with returning and new families in summer 2026!

Sincerely,

Tomeka Magnani

tomekamagnani@arcsei.org

HCBS Program Director

The Arc of Southeast Iowa

(319)351-5017

www.arcsei.org

Callum Scott

callumscott@arcsei.org

Youth Services Facilitator

The Arc of Southeast Iowa

(319)351-5017

www.arcsei.org

Registration and Enrollment

Registration

Registration is on a weekly basis and is to be completed online on The Arc of Southeast Iowa's website, including tuition and activity fee payments. Once registration and payment has been submitted, additional paperwork will be sent to your email via Adobe to be filled out. Paperwork for Camp will be sent via Adobe Acrobat. These materials are to be filled out and sent back as soon as possible. Attendance at summer camp will not be possible without completion of this paperwork and confirmation of funding. We do not accept half-day enrollments.



Enrollment

Enrollments are subject to availability, and priority is on a first-come, first-served basis. Enrollment is slot-based, and the parent/guardian will be accountable for the full financial responsibility of that slot, even if the child is not in attendance for a portion of time. A slot is not guaranteed until all applicable paperwork and fees have been completed. Upon request, your child may be added to a waitlist for a particular week if all available slots are full. Being enrolled for that particular week will not be guaranteed, but if a spot becomes available, the top of the waitlist will be alerted as soon as possible.



Payment and Funding

Payment

Tuition is on a sliding scale based on family income. We require a \$25 activity fee for each week regardless of tuition funding. Payment will be completed online during registration. Depending on the funding type you have chosen, you will apply a promo code during check out. Promo codes will be supplied to you upon request. Please note that activity fees are non-refundable. Payment plans can be approved on a case by case basis.

Funding

There are three ways to help fund summer camp; Waivers, Children At Home (CAH), and United Way. Down below will be information on each of these funding sources.

Medicaid Waivers

ID- If your child is on an Intellectual Disability waiver, they are eligible to use respite units (T1005) or DayHab if 16 years or older (T2020). In order to use respite units, **one parent cannot be working while respite services are being provided.**

BI- If your child is on a Brain Injury waiver, they are eligible to use respite units (T1005). In order to use respite units, **one parent cannot be working while respite services are being provided.**

HD- If your child is on the Health and Disability waiver, they are eligible to use respite units (T1005). In order to use respite units, **one parent cannot be working while respite services are being provided.**

Private Pay

If your child does not have a Medicaid waiver or caregivers are working during camp hours, you may choose to privately pay for summer camp.



Children at Home

CAH is a great resource to help fund camp. CAH is designed to assist families raising a child with a disability in obtaining needed services and supports. **To be eligible for CAH your family's Federal Net (not gross) taxable income for the most recent tax year is less than \$60,000.** You can apply online at Iowa Family Support Network's website.

<https://www.iafamilysupportnetwork.org/families/children-at-home/>

United Way

A Summership provides a student from Johnson and Washington Counties, who are eligible for Free & Reduced Lunch, with a camp scholarship of up to \$350 to use at a camp of their choice. The link provided below will send you directly to the application process: <https://www.unitedwayjwc.org/apply-summership>

To Note

Before attending camp, there will need to be a meeting held. Those using waivers will need to set up a meeting with The Arc and their Case Manager. If the family is new to Arc programs, the camper and their family is highly encouraged to attend the ice cream social held before the start of Camp.



Policies

Illness Policy

Participants must be healthy enough to participate in the program's daily routine. For the safety and comfort of the sick child, please keep them at home until they feel better and no longer present the danger of passing on their illness.

When your child has a fever, vomiting/diarrhea, or other communicable diseases as listed below, they must remain at home one full day after their temperature and symptoms return to normal. If your child comes to the program ill or becomes ill while at the program, you will be asked to pick up your child within an hour. If the parent/guardian cannot be reached, the emergency contact will be notified. It is the responsibility of the parents to arrange for the child to be picked up as soon as possible.

Symptoms requiring the removal of a child from the program include:

- Fever of 100.4° or higher
- Diarrhea - runny, watery, or bloody stools
- Vomiting
- Body rash with fever
- Sore throat with fever and swollen glands
- Bed bugs or head lice
- Severe coughing
- Eye discharge - thick mucus or pus draining from the eye, or pink eye
- Yellowish skin or eyes
- Child is irritable, continuously crying, or requires more attention than staff can provide without affecting the health and safety of other children in our care

Supervision

The Arc is committed to meeting the unique needs of our program participants. In order to ensure child safety, address specific care needs, and foster appropriate interactions, staffing ratios will be based on the needs of the child and will always meet or exceed compliance guidelines. Staff will directly supervise all children by sight and sound at all times. Supervision is essential to the prevention of harm.

Active and positive supervision involves:

- Knowing each child's ability
- Establishing clear and simple safety rules
- Being aware of potential safety hazards
- Standing in a strategic position
- Scanning play activities and circulating
- Focusing on the positive rather than the negative to teach a child what is safe for that child and others

Policies

Behavioral and Physical Incident Policies

We as an organization understand that people with physical and intellectual disabilities may have limitations in understanding and handling emotions in an appropriate manner. Summer camp staff are trained to expect these interactions and how to attempt to de-escalate. Despite this, camp staff or members of our leadership may not be able to always solve an escalated situation.

Here are some reasons why your camper may be sent home:

- Is targeting other campers or causing injury/harm to other campers such as inflicting bruises, bite marks, drawing blood, etc.
- Is the cause of excessive property damage such as making holes in the wall, purposefully breaking expensive equipment/electronics, etc.
- Inflicts injury to staff members that causes prolonged discomfort or the need for medical attention.
- Has an escalation exceeding a 30 minute duration after staff members have reached out to the camper's guardians for tools on how to de-escalate and are still unsuccessful.

Despite being sent home for any of these reasons, suspension from programming will not be extended further than the rest of the same day unless discussed otherwise. Suspension or expulsion from programming may occur due to multiple offenses or extreme aggressive behavior.

Policies

Property Damage

To ensure a safe and respectful environment for all participants, staff, and community members, The Arc of Southeast Iowa has established the following policy regarding property damage.

- **Responsibility for Damage**

- Any damage caused to program property, community locations, community members' belongings, or any building where programming takes place—whether intentional or accidental—will be the financial responsibility of the participant, participant's parent(s) or guardian(s).

- **Prevention & Mitigation**

- Our program staff and agency will take all reasonable measures to prevent and mitigate property damage. This includes supervision, education on respecting property, and implementing safeguards to reduce the risk of damage. However, in the event that damage does occur, the following procedures will apply.

- **Assessment & Payment**

- The program will assess the extent of the damage and provide a written quote for repair or replacement.
- Payment for the damage must be received within 14 days of the issued quote.

- **Failure to Pay**

- If payment is not received within the specified timeframe, The Arc of Southeast Iowa reserves the right to terminate all services provided to the participant until the balance is paid in full.

Policies

Attendance

Regular attendance and punctuality are essential to the success of our program. To ensure a smooth and fair experience for all participants, we require strict adherence to the following attendance guidelines:

- **Punctuality & Participation:**

- Participants must arrive at least 30 minutes after the scheduled start time and be picked up no sooner than 30 minutes before and not past the scheduled end time. Late arrivals disrupt planned activities and impact the experience of other participants.

- **Consistent Attendance:**

- Repeated tardiness or absences may result in removal from the program.
- This ensures that families/clients who can fully commit to the program/service have the opportunity to participate.

- **Timely Drop-Off & Pick-Up:**

- Parents/guardians are responsible for ensuring participants are dropped off and picked up on time.
- Repeated late drop-offs or late pick-ups may lead to formal warnings and potential removal from the program.

- **Right to Exclude:**

- The agency reserves the right to exclude participants from the program if multiple absences, late arrivals, or late pick-ups occur.
- Decisions regarding exclusion will be based on repeated violations of this policy and will be communicated to the client and/or their guardian(s) in writing.

Staff Trainings

Curious about the trainings our staff complete to be a counselor?

Onboarding

Staff will go through the onboarding process with HR director Alissa Voss where they will learn about the history of The Arc, understand their duties as a staff member and assigned online trainings such as brain injury, and Mandtory reporter.

Camper Slides

Camp training includes a slide show presentation of campers that contains a picture of the camper and the most important information about them so the counselors get to meet the kiddos before camp begins and get an understanding of their most important needs. (personal care assistance, likes/dislikes, any safety risks, etc..) Camper packets are also shared with staff at the camp site.

Emergency Procedures

Counselors will walk through their camp location and learn all emergency procedures. (Fire drill, intruder procedure, prevention of lost children, etc..)

Ice Cream Social

Lastly, all campers are encouraged to participate in their ice cream social so new and returning counselors can meet the campers before camp begins.

Service Training

Counselors will come together for service training which contains information about what expectations and responsibilities a counselor has, the importance of team work and communication, as well as other job duties there may be.

De-escalation

Camp training includes teaching counselors tools on how to prevent a behavioral escalation and how these situations are handled at camp based on The Arc's behavioral intervention and support policies and procedures.

Client Specific

Before any counselor is allowed to work with a camper, they must read their client specific information which is the camp information packet that has been filled out by the campers guardians. This packet contains everything the staff would need to know about the camper and how they can work best with them.

We understand that the safety, supervision, and ability to attend to every campers needs is of the utmost importance!

Counselors complete this training regimen to ensure that your camper will feel comfortable with their staff, be able to have fun in a well supervised environment, and have an opportunity to fully be themselves without fear of judgment or misunderstanding.



Location

Kids Camp

Mark Twain Elementary
1355 Deforest Ave
Iowa City, IA, 52240.

Drop off is at 9:30 am

Pick up is between 3:30-4 pm.

Teens Camp

Elizabeth Tate High School
1528 Mall Drive
Iowa City, IA 52240.

Drop off is at 9:30 am

Pick up is between 3:30-4 pm.

**Please be aware that
The Arc does not transport
clients to and from summer
camp.**

**There is no camp the week of
June 29th-July 3rd.**

***The Arc does not provide sunscreen
so please provide your own!!***

What to bring everyday.



**Extra clothes
just in case!**



**Briefs and wipes/ hygiene
products if applicable.**



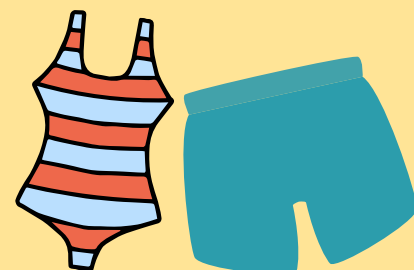
**Lunch and snacks are
necessary to bring unless
otherwise instructed by
staff.**



**Sunscreen and bug
spray!**



**A water bottle to stay
hydrated!**



Swimming gear!

Kids Camp Weekly Descriptions

Week 1 - June 15-19

Outdoor Adventures

Campers will get to know their new friends and staff before diving into forest week! We will explore nature and enjoy the outdoors. The group will make animal-themed crafts, play outside, make some animal friends at a petting zoo!

Week 2 - June 22-26

Magic Makers

Campers will have a magical week full of potions, wands, and broomsticks. We'll do magic-themed crafts and make some memories with our favorite Disney character guests.

Week 3 - July 6-10

Under the Sea

It's water week! Campers will have fun at pools and splash pads. We'll make fish-themed crafts and enjoy water activities.

Week 4 - July 13-17

Little Musicians

Campers will explore their creative side by participating in music therapy, making musical crafts, playing Just Dance, and doing karaoke.

Week 5 - July 20-24

Dinosaur Days

Campers will take a trip back in time by making dinosaur-themed crafts and becoming little archeologists at parks like Fossil Gorge.

Week 6 - July 27-31

Dream Big

This week, the group will learn from the community by hearing from guest speakers such as fire-fighters, doctors, and veterinarians. Campers will learn about their friends' future goals through crafts and activities.

Week 7 - Aug 3-7

Wacky Workouts

This week is all about movement! Campers will get active at trampoline park and enjoy some friendly competition through games and sports.

Teens Camp Weekly Descriptions

Week 1 - June 15-19

Forest Creatures

Campers will get to know their new friends and staff before diving into forest week! We will explore nature and enjoy the outdoors. The group will make animal-themed crafts, play outside, make some animal friends at a petting zoo!

Week 2 - June 22-26

Witches & Wizards

Campers will have a magical week full of potions, wands, and broomsticks. We'll do magic-themed crafts and make some memories with our favorite Disney character guests.

Week 3 - July 6-10

Pool Party

It's water week! Campers will have fun at pools and splash pads. We'll make fish-themed crafts and enjoy water activities.

Week 4 - July 13-17

We Got the Beat

Campers will explore their creative side by participating in music therapy, making musical crafts, playing Just Dance, and doing karaoke.

Week 5 - July 20-24

Jurassic Arc

Campers will take a trip back in time by making dinosaur-themed crafts and becoming little archeologists at parks like Fossil Gorge.

Week 6 - July 27-31

Camp Community

This week, the group will learn from the community by hearing from guest speakers such as fire-fighters, doctors, and veterinarians. Campers will learn about their friends' future goals through crafts and activities.

Week 7 - Aug 3-7

Work Hard, Play Hard

This week is all about movement! Campers will get active at trampoline parks and enjoy some friendly competition through games and sports